

Crystal[®]
Diagnostics



2024 CATALOG

CONSUMENTS



STEC ANTIBODY KITS 512V VTESTS

These antibodies are highly selective in identifying the presence of Shiga-toxin-producing Escherichia coli (STEC) on the AccuPath testing platform. Antibodies are loaded onto the Sample Carrier and the placed into the AccuPath system. 16-96 well trays.



SALMONELLA ANTIBODY KITS 768 TESTS

These antibodies are highly selective in identifying the presence of Salmonella on the AccuPath testing platform. Antibodies are loaded onto the Sample Carrier and the placed into the AccuPath system. 16-96 well trays.



LISTERIA MONOCYTOGENES ANTIBODY KIT 768 TE

These antibodies are highly selective in identifying the presence of Listeria monocytogenes on the AccuPath testing platform. Antibodies are loaded onto the Sample Carrier and the placed into the AccuPath system. 16-96 well trays.



LISTERIA SPECIES ANTIBODY KITS 768 TESTS

These antibodies are highly selective in identifying the presence of Listeria species on the AccuPath testing platform. Antibodies are loaded onto the Sample Carrier and the placed into the AccuPath system. 16-96 well trays.



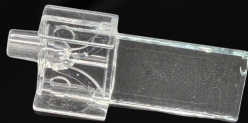
ENRICHMENT MEDIA MTSB+N

Enrichment media for E. coli O157, STEC, and Salmonella testing. Media is packaged in a 10KG bucket. After dissolved and cycled through the autoclave, liquid media can be stored for extended periods from 2-10 Celsius and warmed to the desired temperature for culture growth when needed.



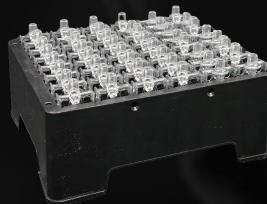
ENRICHMENT MEDIA FOR LISTERIA

Enrichment media for Listeria testing. Media is packaged in a 2KG bucket.



ACCUPATH IMAGING SAMPLE SLIDE

AccuPath Sample Slides are used in the imaging process of the AccuPath testing platform. Each test will utilize 2 sample slides in the testing process. Trays are loaded into the Sample Slide tower in the AccuPath system.



ACCUPATH IMAGING SAMPLE SLIDE TRAY

AccuPath Sample Slides are used in the imaging process of the AccuPath testing platform. Each test will utilize 2 sample slides in the testing process. Trays are loaded into the Sample Slide tower in the AccuPath system.

CONSUMABLES



PBS TRAY- 32

A PBS tray is used for sample washes and IMS sample concentration phase of the AccuPath system. PBS trays are loaded into the AccuPath the PBS Tray tower in the AccuPath system.



PBS POWDER PACKET

Our Ultra High Grade PBS Powder Packets are essential for sample washes and IMS concentration in the AccuPath system, ensuring efficient and consistent sample processing when loaded into the system's PBS Tray tower.



PBS BOTTLE KIT

The PBS Bottle Kit is required for use with the AccuPath system. This kit serves as an in-house storage system for PBS and liquid waste that is used in the sample protocol. The PBS Bottle Kit includes-2: 2 L plastic PBS bottles, waste hose, fill hose, fill cap, waste cap, AX funnel, and O-rings.



CONSUMABLE WASTEBOX

Cardboard waste box for the functions in the AccuPath system.



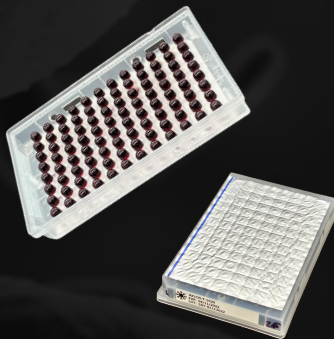
DEEP WELL PLT- 80

Custom Deep Well Plates are required consumables to be used with the AccuPath system. Deep Well Plates are loaded into the Deep Well Plate Tower and are used during the automated IMS concentration phase of the AccuPath system.



300UL LOW RETENTION PIPETTE TIPS

300 uL high retention pipette tips.



LIQUID CRYSTAL FOR THE AUTOXPRESS- 1920

Liquid Crystal (LC) reagents are used during the detection phase of the AccuPath. The 96 well LC plates are loaded into the LC Towers in the AccuPath system. Includes 40-96 well plates.



For more information:

Contact:

Email: marketing@cystaldiagnosics.com

(720) 329-1902