

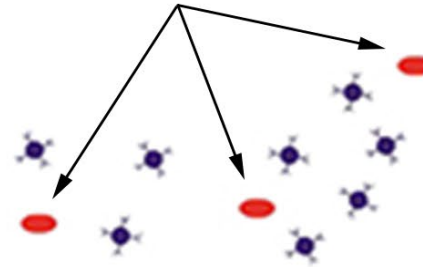
Antibodies **Microspheres**



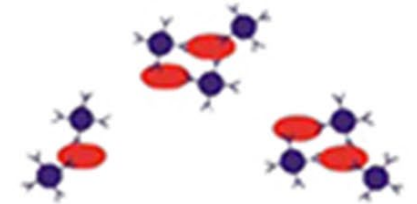
Antibodies coat microspheres



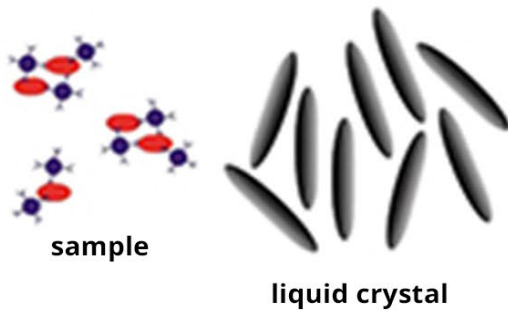
Test samples are mixed in



If pathogens are present aggregates will bind to microspheres within sample



Sample is combined with liquid crystal and placed in BioChip



Aggregates will distort liquid crystal alignment if pathogens are present

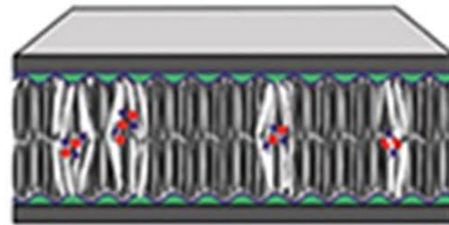
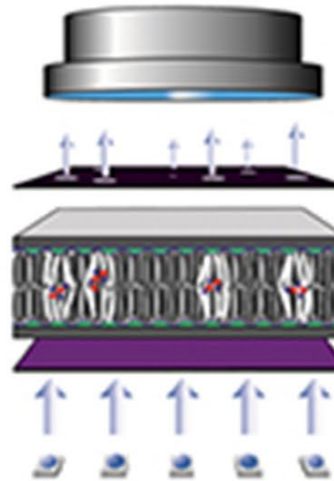
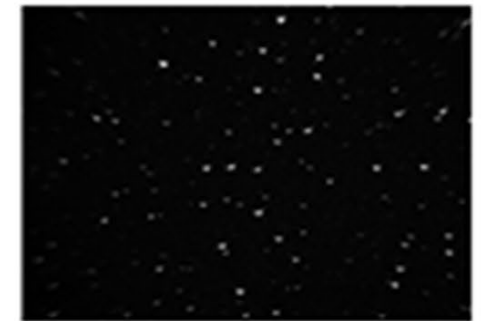


Image processor



Algorithms are used to compare the sample image against a negative control to determine if the sample is positive or negative



Light source